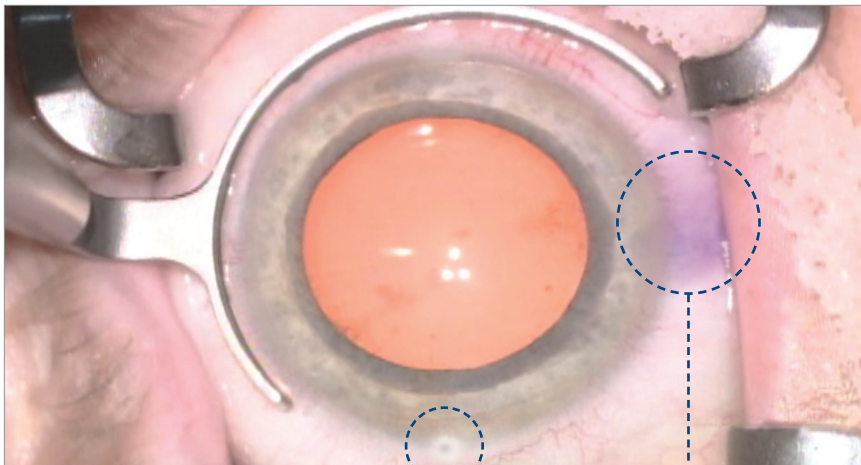


Wet-Field® Osher ThermoDot™

Precision Marking That Lasts

The Osher ThermoDot™ Marker was developed in conjunction with renowned cataract surgeon Dr. Robert Osher. The Osher ThermoDot Marker is an intraoperative bipolar instrument designed to create an ink-free, fine dot on the eye that can be used as a precise reference point for a variety of procedures, including astigmatic keratotomy and toric intraocular lens implantation.



ThermoDot Mark
(precise dot)

Ink Mark
(smeared mark)

Product Benefits

- Ink-free, will not smear
- Lasts the duration of surgery
- Clearly visible, precise dot
- Unique curve facilitates perpendicular approach
- No additional patient discomfort


For ordering information call:
1.866.906.8080/1.781.906.8080
or visit www.beaver-visitec.com

bvi Beaver Visitec
Keeping Your Vision in Sight

The Osher ThermoDot Marker is the latest innovation from BVI's Wet-Field® product line. Wet-Field Bipolar instruments are an industry leader in product quality and the same can be expected from the new Osher ThermoDot Marker.

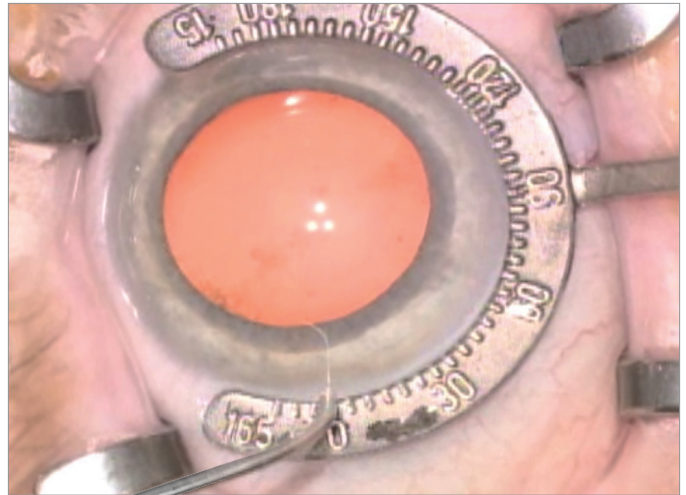
Wet-Field® Osher ThermoDot™ Marker*

Designed to create an ink-free, precise marking that lasts the duration of the surgery.



Description	Item #
25 GA, fine tip, curved, 5/Bx	221270

*U.S. and International patents pending.



For a complete listing of our Wet-Field product line, please refer to our catalog. Please visit www.beaver-visitec.com

Beaver-Visitec International brings together the 80-year heritage of Beaver® microsurgical blades, Visitec® cannulae and instruments, Merocele® fluid control products, and Wet-Field® electro-surgery products. So you have a single, responsive source for the brands you trust.



Beaver-Visitec International, Inc.
411 Waverley Oaks Road, Waltham, MA 02452
Tel: 1.866.906.8080 Fax: 1.866.906.4304
www.beaver-visitec.com